

MONTHLY MEMBERSHIP PROGRESS REPORT

District 316 H

Results as of: 5/31/2020

GMT:

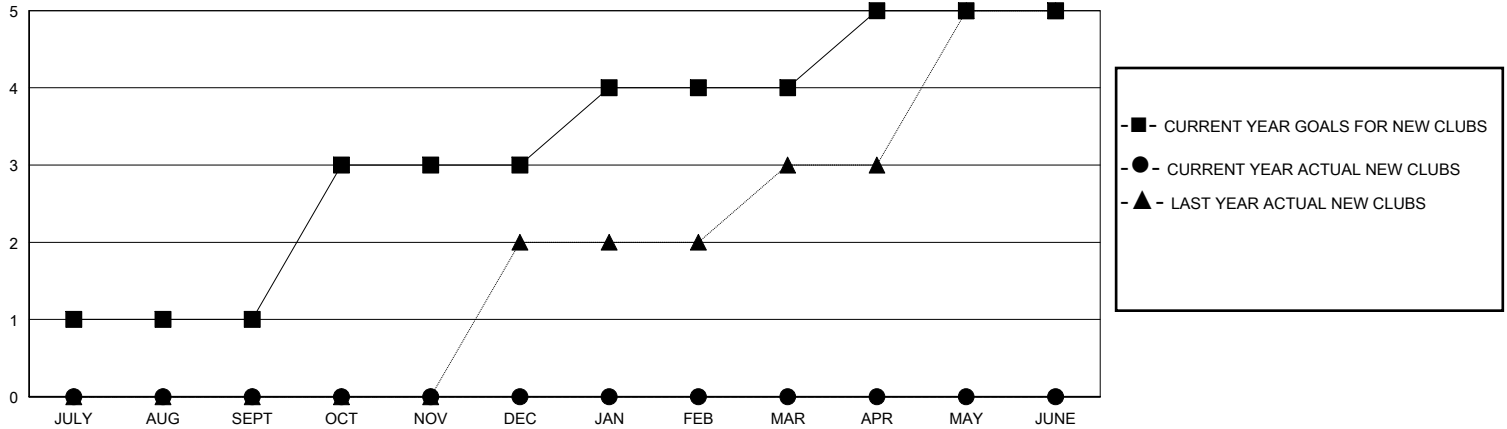
LOCATION INDIA

GMT CA

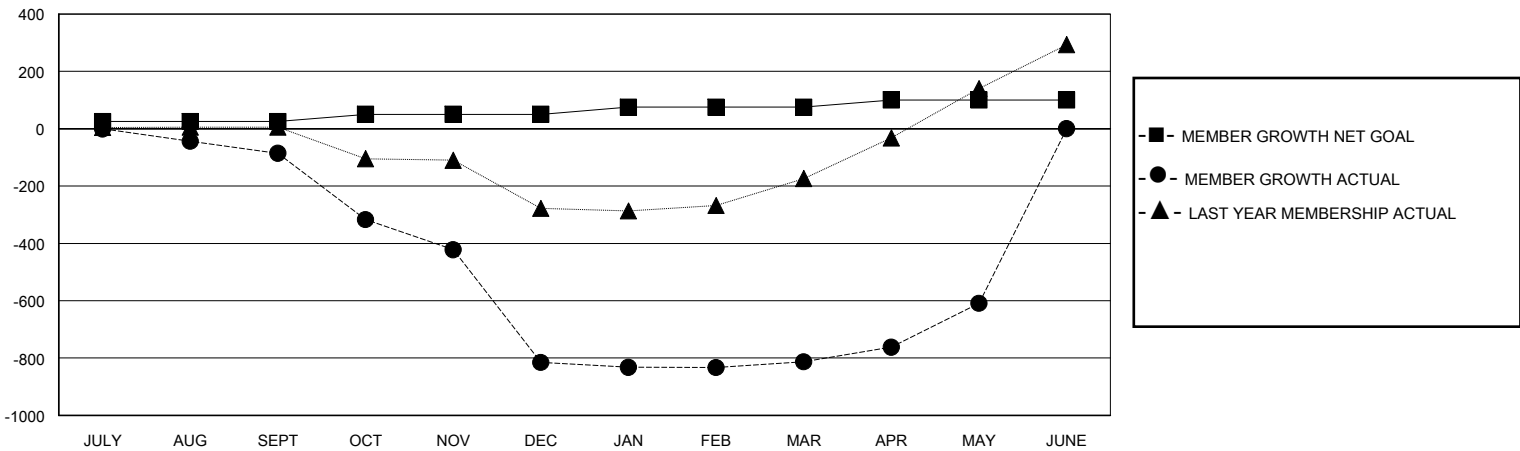
| Clubs | | | |
|-----------------------|---------------|-----------|---------------|
| RESULTS FOR 2019-2020 | | | |
| QUARTER | NEW CLUB GOAL | NEW CLUBS | DROPPED CLUBS |
| JULY/AUG/SEPT | 1 | 0 | 3 |
| OCT/NOV/DEC | 2 | 0 | 9 |
| JAN/FEB/MAR | 1 | 0 | 1 |
| APR/MAY/JUNE | 1 | 0 | 0 |

| Members | | | |
|-----------------------|------------------------|----------------------|--|
| RESULTS FOR 2019-2020 | | | |
| QUARTER | MEMBER GROWTH NET GOAL | MEMBER GROWTH ACTUAL | DROPPED MEMBERS ACTUAL (including transfers) |
| JULY/AUG/SEPT | 25 | 19 | 100 |
| OCT/NOV/DEC | 25 | 66 | 794 |
| JAN/FEB/MAR | 25 | 33 | 27 |
| APR/MAY/JUNE | 25 | 210 | 3 |

GOALS AND ACTUAL NEW CLUBS CUMULATIVE



GOALS AND ACTUAL MEMBERS CUMULATIVE



| | | |
|------------------------|---|------------------------------------|
| DROPPED CLUBS: 13 | 14 CLUBS OF 57 ADDED 1 OR MORE NEW MEMBERS | GENDER DISTRIBUTION |
| | | MALE 1,433 (76.59%) |
| | | FEMALE 438 (23.41%) |
| DROPPED MEMBERS | CLICK HERE FOR CUMULATIVE MEMBERSHIP DATA | TOTAL FAMILY UNIT MEMBERS 65 |
| DECEASED 9 | | FAMILY MEMBERS PAYING HALF DUES 33 |
| CLUB CANCELLED 749 | | |
| OTHER 166 | | |
| TOTAL 924 | | |